



Jet Propulsion Laboratory
California Institute of Technology

Mars Exploration Program Strategic Planning

Joe C. Parrish
Manager, Mars Exploration Program
NASA Jet Propulsion Laboratory

MEPAG 12 VM

21 June 2021



Reminder of long-standing MEP objectives

Objectives

- Understand the potential for life elsewhere in the Universe
- Characterize the present and past climate and the processes of climate change
- Understand the geological processes affecting planetary interiors, crust, and surface
- Develop knowledge necessary for eventual Human Exploration

Mars Exploration Program Goals

Life

Climate

Geology & Geophysics

Prepare for Human Exploration

Key Mars Discoveries: A Springboard to the Future

- Complex geological and climate history
- Diversity of ancient water-rich environments
- Environments that have potential to preserve bio-signatures
- Cold, dry planet today still changing
- Widespread subsurface ice provides resources for exploration and potential special environments for life

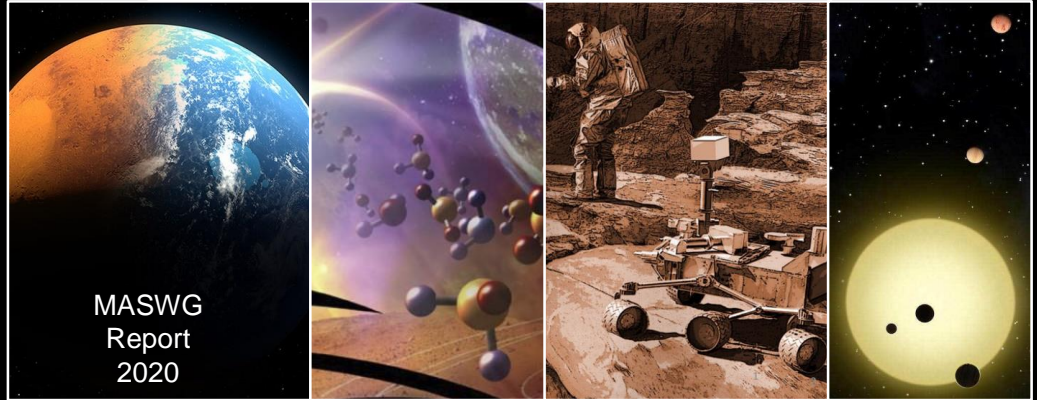
Guiding Mars Exploration Program Themes

Past:	<i>“Follow the Water”</i>	Found evidence of water, past & present
Current:	<i>“Explore Habitability”</i>	Found evidence of habitable environment from past
Future:	<i>“Seek Signs of Life”</i>	Search for biosignatures and return samples

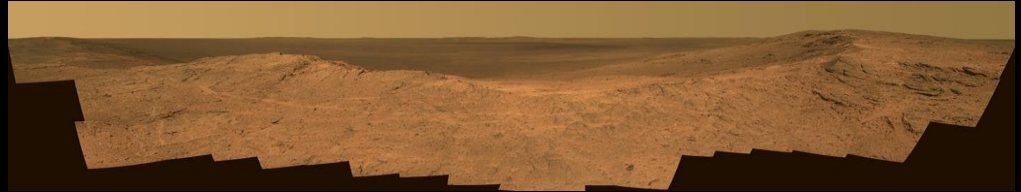
- The goals of the Mars Exploration Program have been stable for two decades
- MEP guiding themes have evolved over that time, based on capabilities and discoveries
- Question today: How should we construct the next decade(s) of MEP?

Key inputs to MEP strategic planning

- NASA strategic objectives
- SMD programmatic and budget priorities
- Guidance & priorities from Planetary Science Decadal Survey
- Findings from the Mars Architecture Strategy Working Group (MASWG)
- Community inputs (MEPAG)

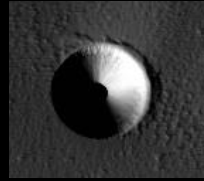


NASA / JPL



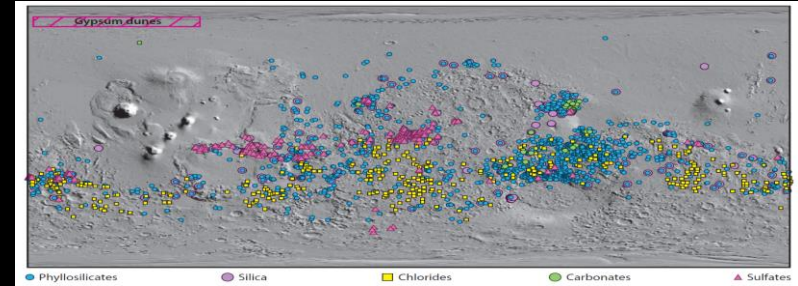
MASWG Mission Arcs are great exemplars of potential directions for MEP mission/investigation strategy

#1: Diverse Ancient Environments & Habitability



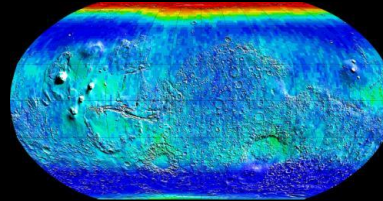
NASA / JPL / U. Arizona / MRO HiRISE

#2: Subsurface Structure, Composition & Possible Life

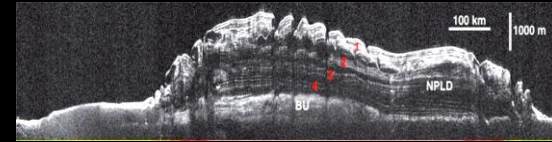


Ehlmann & Edwards, 2014

#3: Ice—Geologically Recent Climate Change



NASA / JPL / ODY GRS-NS-HEND

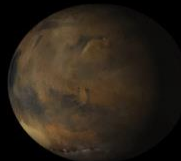


NASA-ASI / JPL / MRO SHARAD



NASA / JPL / MRO CTX & HiRISE

#4: Atmospheric Processes and Climate Variability



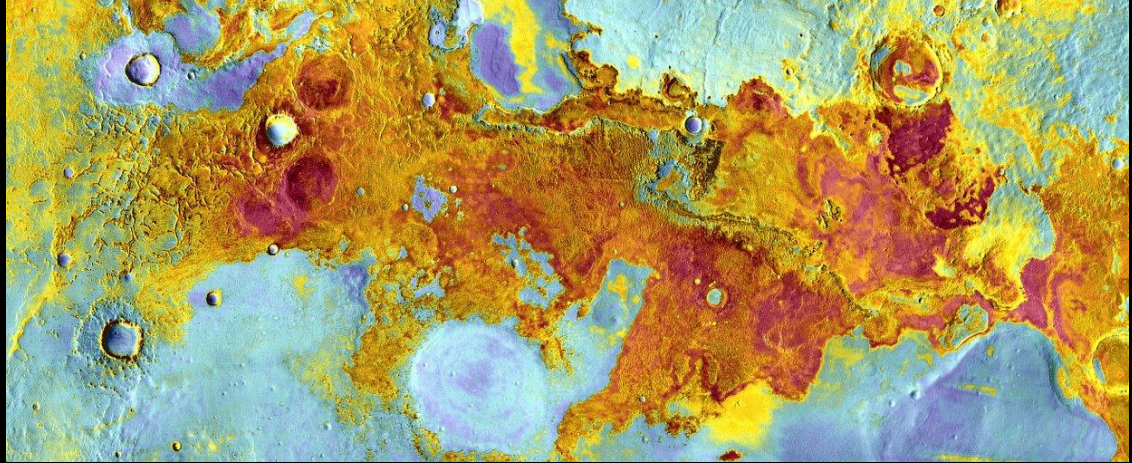
NASA / JPL / MSSS / MRO MARCI



NASA / JPL / U. Arizona / MRO HiRISE

Lower-cost missions are one potential mechanism to address MASWG recommendations

- Smallsats and other novel spacecraft
- Innovative payload delivery approaches
- Partnerships
 - International
 - Commercial



NASA/JPL-Caltech-Arizona State University

The Mars science community is an essential part of MEP strategy development

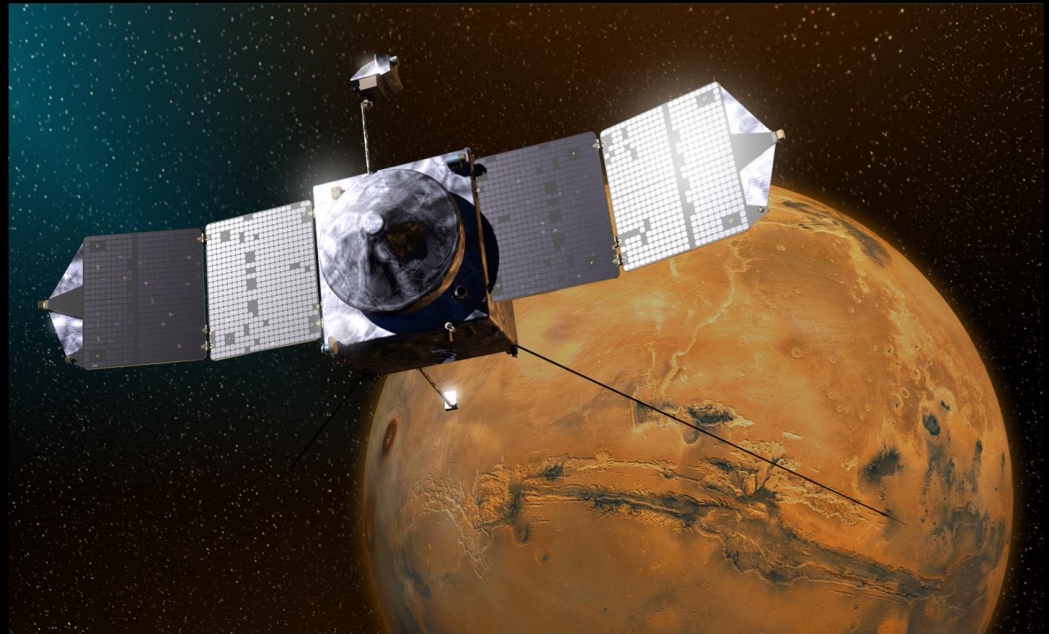
- Transformation of high-level goals into missions and investigations
- Community efforts to refine strategy and answer key questions
- Advocacy



NASA/JPL

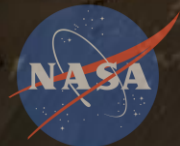
Seeking your inputs

- Science investigations
- Mission concepts
- Enabling and enhancing technologies
- Community efforts (e.g., MEPAG, working groups, workshops)



NASA/GSFC

Credit: NASA/GSFC



Jet Propulsion Laboratory
California Institute of Technology

jpl.nasa.gov